

Turf Master LTD.

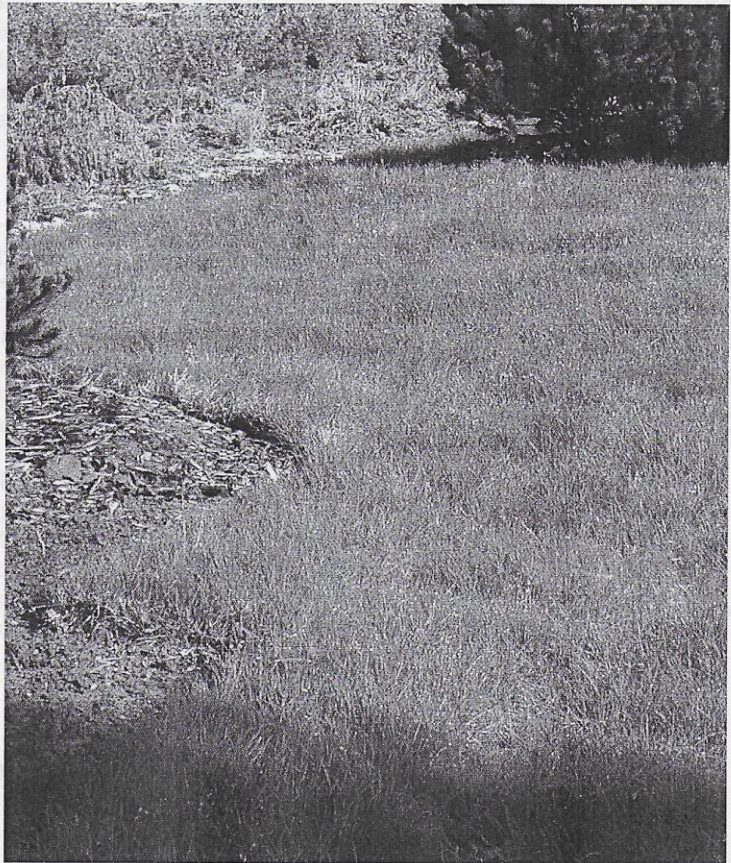
SOD DELIVERY INSTALLATION

Colorado Buffalo Blend™

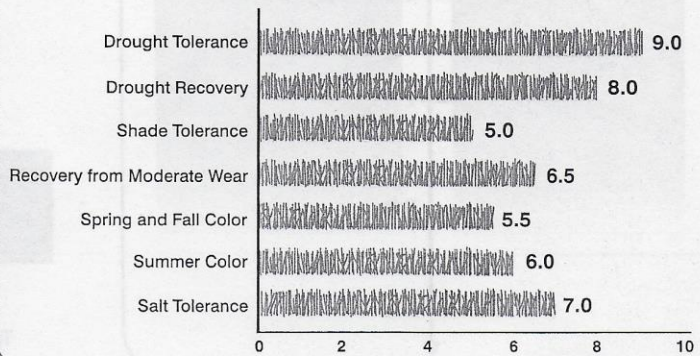
A New Turf Blend for your Xeric Landscape

- **Combination warm and cool season grasses - green in Spring, Summer and Fall**
- **Half of the water usage of Kentucky Bluegrass**
- **Excellent density that helps control weeds in the Spring**
- **Drought tolerance of Buffalo and Blue Grama**

Colorado Buffalo Blend™ grass is a combination of Buffalo grass, Bluegrama, Chewing Fescue, and Canadian Blue Grass. Both the Buffalo and Bluegrama are warm season, native varieties that can require very little water and maintenance. The Canadian Blue Grass and Chewing Fescue are cool season, low water, low growing turf grasses that have been added to give stability during harvest and add color in the Spring and Fall.



Colorado Buffalo Blend™ Performance Chart



Colorado Buffalo Blend™

Remember that a pure warm season turf will be mostly dormant from Fall to Spring. It is not recommended that Colorado Buffalo Blend™ be installed before May 1st. If we experience a late Spring cold snap, newly installed turf could be severely set back, or killed.

Colorado Buffalo Blend™ uses native seed mixes that are more suited to this region and have less winter kill than other imported varieties.

Colorado Buffalo Blend™ is not recommended for high traffic areas with excessive foot traffic, such as athletic fields and parks. Remember, this is a low, slow growing xeric turf.

Colorado Buffalo Blend™, once established, has the unique ability to become semi-dormant under severe drought stress and make a quick recovery when moisture returns.

ESTABLISHMENT

WATERING:

Watering is critical during establishment, which is typical for any turf. Water DAILY for the first ten to fourteen days.

Keep the turf moist and do not let it dry out. For the first year of establishment, it is recommended that your new Colorado Buffalo Blend™ be watered like it was bluegrass. Proper establishment in the first year will lead to a healthy, vigorous turf that will lead to significant water savings in the future years.

MAINTENANCE – After the turf has been established for the first season

FERTILIZATION:

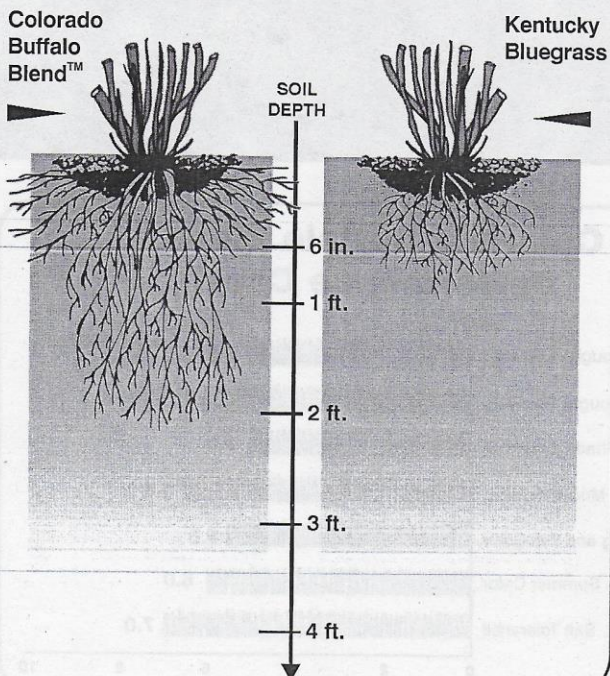
Remains the same as establishment, approximately 2 times per year, 2 pounds per 1,000 sq. ft. for the year. Heavier applications may be used to achieve greater results. Make sure of adequate watering after applying fertilizer.

WATERING:

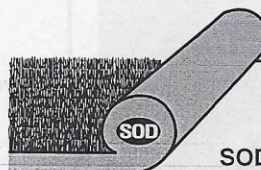
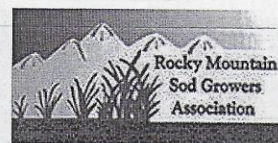
Depending on how you want to maintain the color and density of your turf, your lawn could require a watering schedule of 1 to 2 inches of water every two weeks, or you could spread out the watering to one half to one inch per week from May to September.

Improved Drought Tolerance:

An extensive root system allows Colorado Buffalo Blend™ to display excellent drought tolerance.



*Grass doesn't waste water,
people do!*



Turf Master LTD.

SOD DELIVERY INSTALLATION

3327 Giddings Road • Fort Collins, CO 80524
Phone (970) 493-8311 • Fax (970) 224-3547
Toll Free (866) 493-8311 • turfmaster@interfold.com
www.turfmastersod.com